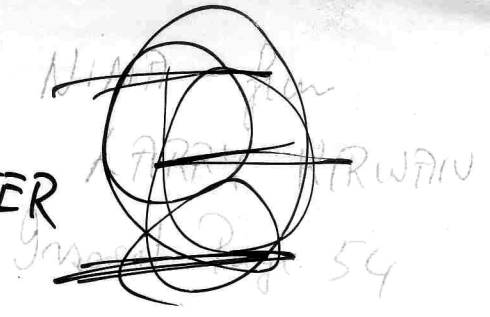


BLOOD IS THICKER THAN WATER



G Cmaj7
 I came to a delta deep and wide
 Am
 I had to get on over to the other side
 G Em
 To free myself from hurt and doubt
 A C
 What is within is gonna have to be without
 G BmE
 But the bridge was broken beyond repair
 Am C D
 And I know I'm gonna have to get myself on over there

Blood is thicker than water G - G7

Wash my face in rivers of pain C
 Don't give up my sons and daughters Am F
 You have no choice but to Am
 Hold on, hold on C D

INTRO CHORDS + NOTES
 B D G D
 C E A E

Break G Gdim C A7

Blood is thicker than water G
 And it hurts more than the rain G7 C
 Don't give up my sons and daughters..... Am C
 Hold on, hold on, hold on Am F D

I watched the ship leaving from the pier
 Takin' away all of my hopes and fears
 I said goodbye to peace of mind
 I had to leave all of that so far behind
 I've been searchin' now for many's the long year
 And I'm gonna keep on fightin' through the rain and tears

Blood

B47 demo 9/4/97

G str. C^{A7} A - 1st 2nd

verse G C^{A7} A- C G E- A C

G B- A- C D Blood

chorus G G⁷ c A-

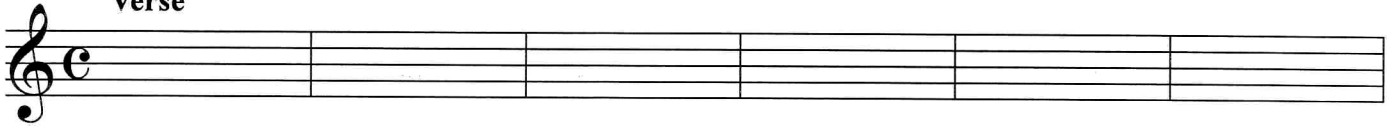
F A- C D Blood

G G⁷ c A-

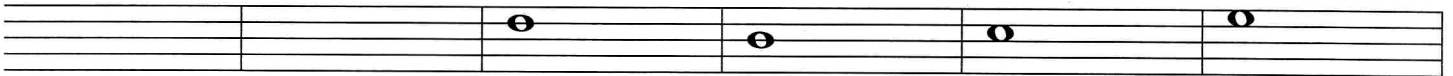
C A- F D

Blood

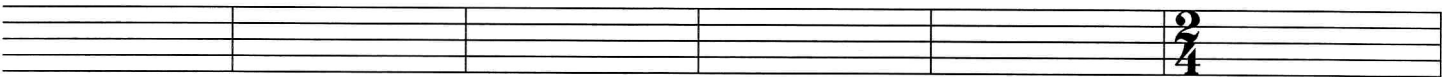
G CMaj7 Amin C G Emin
 Verse



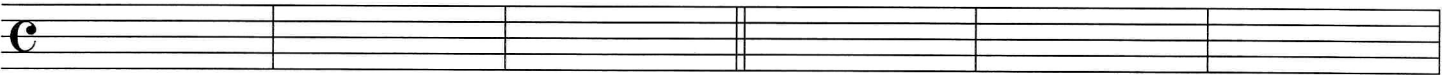
A C G Bmin Amin C



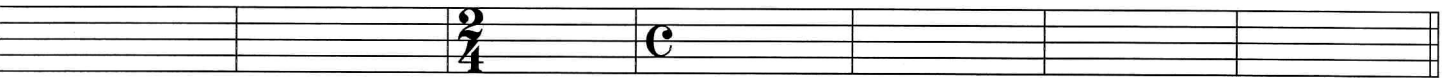
D G G7 C CBminAmin
 Blood Chorus



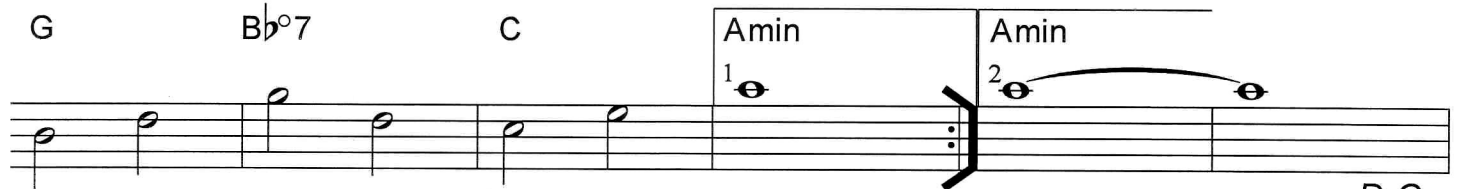
F Amin C D G G7
 Blood Chorus



C CBminAmin C Amin F D



G Bb°7 C



Amin

Amin

1

2

D.C.

Blood

Verse Chorus Chorus Line

Line

1/2 Verse

Chorus

1/2 Chorus

daughters

Line

Line

Line

Alt. Line

Line

Line

Chorus

Chorus

Chorus

1/2 Chorus

Line

Line