

FIVE POINTS

Em G7
D'ya remember back in the Five Points
C D7
When the fire was in the air
G7
And the streets were hot as the hob of hell
C D
And the bodies were everywhere
B7 G7
And ould Johnny stood up on a sailor's trunk
Am7 D7
And he roared out tot he sky
Bb
I didn't come here to America
D
To give up the ghost and die

G
Oh I didn't come here to America
C D7
Across the ragin' foam
G
To die like a slave in a pigsty
C D
I came here to find a home
C
Where I could live with dignity
B7 C
And hold me head up high
D
So don't go messin' with me or me family
Or I'll blow these Five Points to the sky

(Jig - shake hands with your uncle Pat me boys....

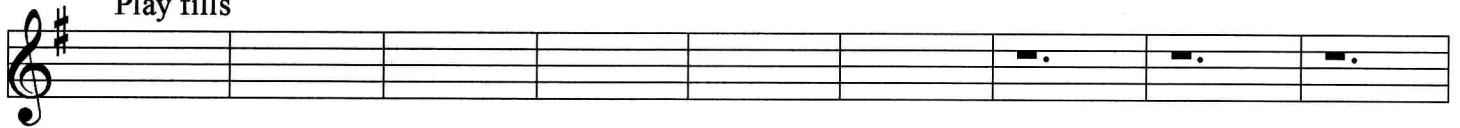
Em G7
Oh them soldier boys are goin' wild
C D7
Down by the Gates of Hell
G7
I msut get to St. Patrick's
CG D
To ring the warnin' bell
B7 G7
I won't join their bloody army
Am7 D7
Sooner burn down Kerosene Row
Bb
So to hell with your kings and your presidents
D
Let them fight their own bloody wars-oh

Five Points

EmG7 C D7 G7 C D B7 G7 Am7D7 B \flat D



G C D7 G C D C B7 C D
Play fills



Jig: Shake Hands With Your Uncle Pat Me Boys

G C D7 G



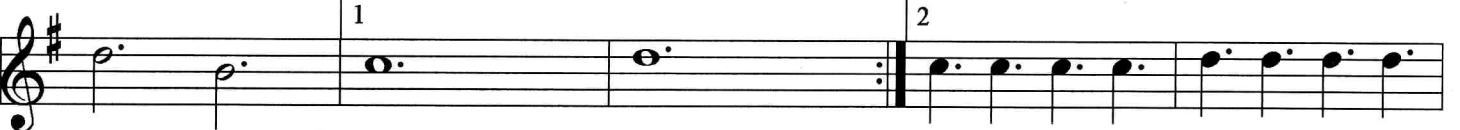
C D C B7 C



D D.C. Am7 D



Bridge D $^{\circ}$ /F B7 C D C D



E

Break

Detailed description: This musical staff is in treble clef with a key signature of two sharps. It contains a single sharp note (F#) on the staff line. The word "Break" is written above the staff.

F#m A7 D E7 A7 D E C#7 A7 Bm7E7 C E

Detailed description: This musical staff is in treble clef with a key signature of two sharps. Above the staff, the chords F#m A7, D E7, A7, D E, C#7 A7, Bm7E7, and C are listed. Below the staff, a sequence of notes is written, including some sixteenth-note patterns and quarter notes, ending with a double bar line.

A D E7 A D E D C# D E

Play fills

Detailed description: This musical staff is in treble clef with a key signature of two sharps. Above the staff, the chords A, D, E7, A, D, E, D, C#, and E are listed. Below the staff, a sequence of notes is written, including a double bar line with repeat dots at the beginning and end, indicating a fill section.

A D E7 A

Detailed description: This musical staff is in treble clef with a key signature of two sharps. Above the staff, the chords A, D, E7, and A are listed. Below the staff, a sequence of notes is written, including a double bar line with repeat dots at the beginning.

D E D C# D

Detailed description: This musical staff is in treble clef with a key signature of two sharps. Above the staff, the chords D, E, D, C#, and D are listed. Below the staff, a sequence of notes is written, including a double bar line with repeat dots at the end.

E

1

E

2

Detailed description: This musical staff is in treble clef with a key signature of two sharps. Above the staff, the chord E is listed. Below the staff, a sequence of notes is written, including a double bar line with repeat dots. Above the second measure, the number '1' is written. Above the final measure, the number '2' is written.

E A D E A

Detailed description: This musical staff is in treble clef with a key signature of two sharps. Above the staff, the chords E, A, D, E, and A are listed. Below the staff, a sequence of notes is written, including a double bar line with repeat dots at the end.